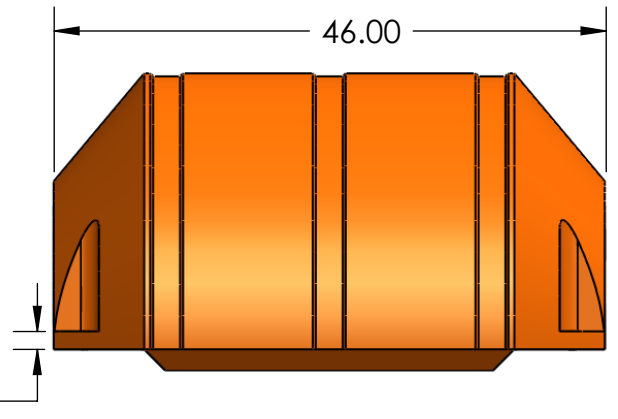
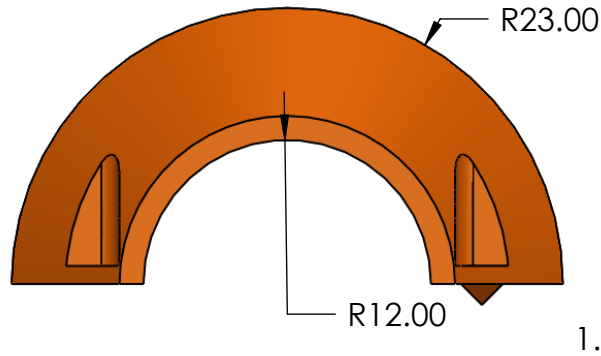
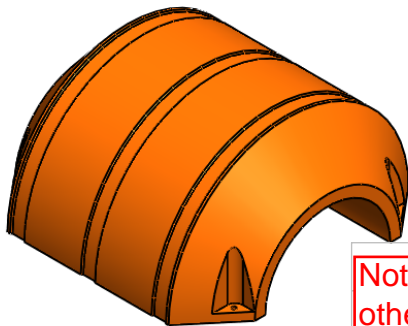
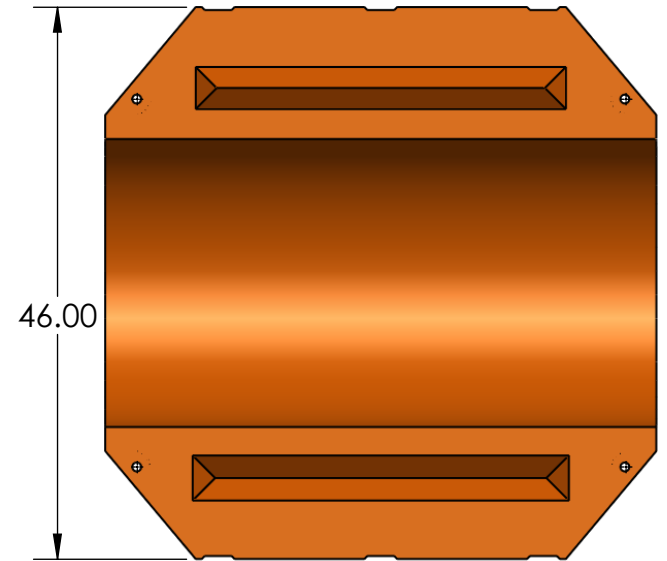
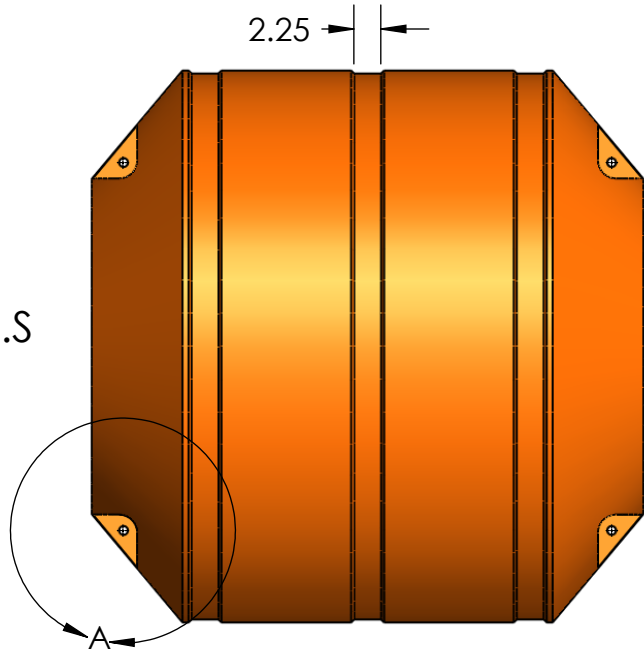
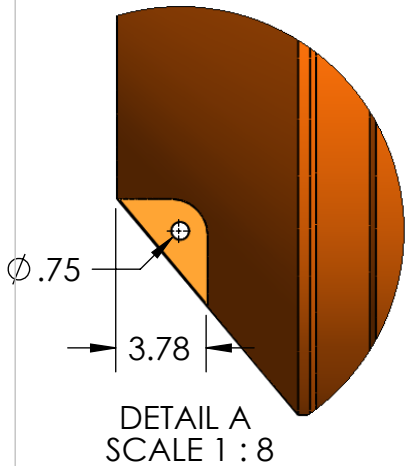


24" PIPEFLOAT
PART # 44424

PART WT. 60 LB.S
FOAM WT. 27 LB.S

SHIPPING WT. 87 LB.S
FLOATATION MAX: 752 LB.S



Note: Unless otherwise noted on this or other documents typical tolerances are +/- 0.05" per inch of linear length.

PROPRIETARY AND CONFIDENTIAL
THE INFORMATION CONTAINED IN THIS DRAWING IS THE SOLE PROPERTY OF Rotonics Mfg. Inc.. ANY REPRODUCTION IN PART OR AS A WHOLE WITHOUT THE WRITTEN PERMISSION OF Rotonics Mfg. Inc. IS PROHIBITED.

UNLESS OTHERWISE SPECIFIED:

DIMENSIONS ARE IN INCHES
TOLERANCES:
FRACTIONAL ±
ANGULAR: MACH ± BEND ±
TWO PLACE DECIMAL ±
THREE PLACE DECIMAL ±

INTERPRET GEOMETRIC TOLERANCING PER:
MATERIAL

FINISH

NAME DATE

DRAWN

CHECKED

ENG APPR.

MFG APPR.

Q.A.

COMMENTS:

TITLE:

24" pipe float
part # 44424

SIZE
A

DWG. NO.
KG70920

REV
1

SCALE: 1:16 WEIGHT:

SHEET 1 OF 1

NEXT ASSY	USED ON
APPLICATION	
DO NOT SCALE DRAWING	